



ZRICKS

[www.Zricks.com](http://www.Zricks.com)



ZRICKS

[www.Zricks.com](http://www.Zricks.com)



[www.Zricks.com](http://www.Zricks.com)









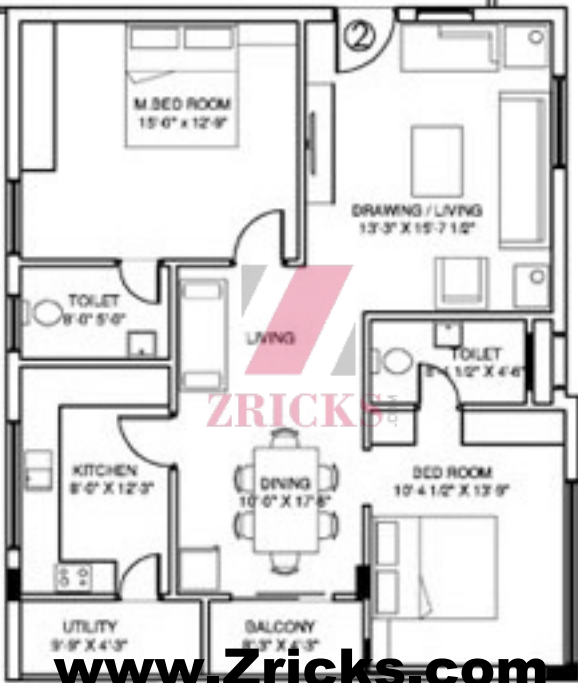
[www.Zricks.com](http://www.Zricks.com)

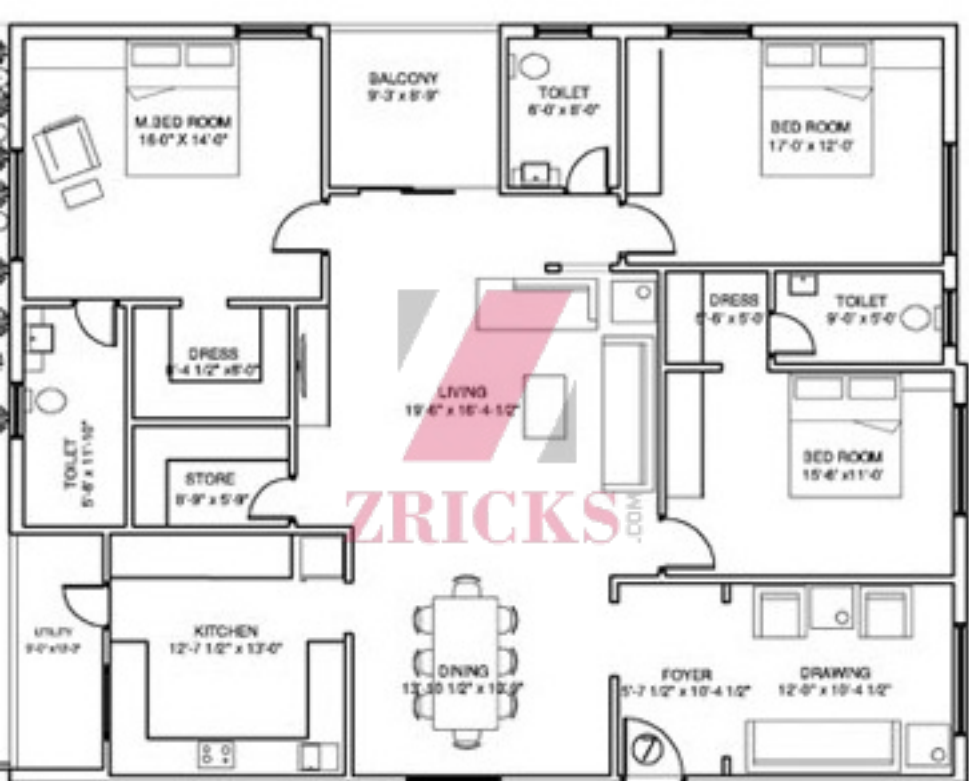












[www.Zricks.com](http://www.Zricks.com)



Gachibowli

laxmi ram  
**TRIDENT**



HP  
Petrol  
Pump

**Spensors**  
Hyper Market

To Airport

Pillar  
125

PVNR Express Way

Food  
World

**ZRICKS**  
Real Estate

Mehdipatnam

[www.Zricks.com](http://www.Zricks.com)

- **Structure :**  
cellar + Stilt + 5 Floors RCC framed structure, Seismic Zone II compliant
- **Super Structure :**  
9" thick light weight brick masonry for external walls, 4 ½ "thick light weight brick masonry for internal walls
- **Plastering :**  
Plastering for all external, internal walls and Ceiling with two Coats of Cement mortar with sponge finish.
- **Painting :**  
Two coats luppam finish and painting in plastic Emulsion for internal walls. External wall in weather proof Acrylic paints or equivalent
- **Doors :**  
Main door frame in teak wood with Designed Teak wood shutter with melamine polish and designer hardware of reputed make. Internal doors will have teak wood frames with water resistant flush shutters fitted with reputed make hardware fittings with painting. UPVC/ Aluminium Power coated balcony doors.
- **Windows :**  
UPVC Windows / Aluminium Power Coated windows.
- **Flooring :**  
24" X 24" Branded Vitrified tiles, Ceramic tiles flooring for Balcony and utility areas.
- **Kitchen :**  
Granite top cooking platform with stainless steel sink with two taps and glazed ceramic tile dadoing up to 2'.0" ht. above the platform.
- **Toilets :**  
Toilets will be provided with I.W.C/ E.W.C with wash basin, shower pint, wall mixture. Non skid ceramic tiles flooring and gazed tiles dado up to door height.
- **Electrification :**  
Three phase electrical (3KVA) supply, Concealed copper wiring with good quality switches. 15 Amps Power sockets shall be provided in Kitchen, toilet and telephone connection shall be provided in hall. Power outlets in all bedrooms. Power outlets for geysers in attached bathrooms.
- **Water supply :**  
Municipal & Bore well water connections with separate storage provision in overhead tank and sump. One Municipal water

**ZRICKS**.COM



connection will be provided in kitchen & bore well water supply connection with required pumps.

- Sanitary :

ISI Quality, PVC pipes for waste water lines and sewer lines  
G.I / U.P.V.C. pipes for water lines.

- Lift :

6 Passenger capacity V3 F lift of KONE make.

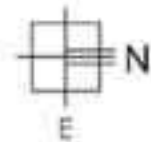
- Security :

Inter cum phones for all flats.

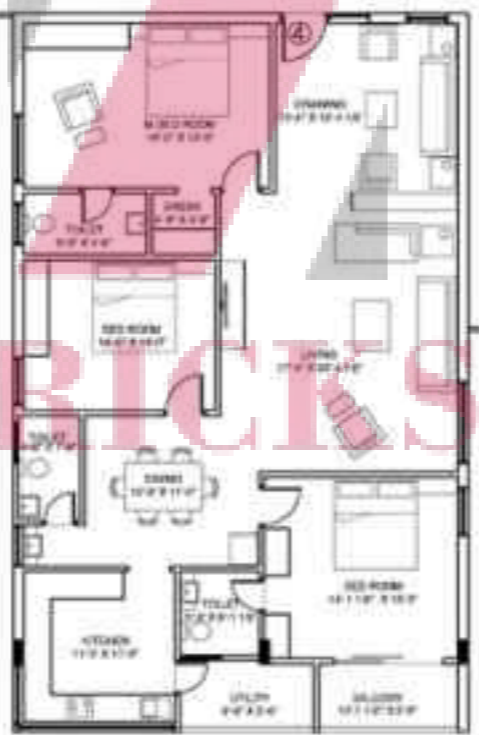
- Stand by Power :

Generator for Common lighting, Lift, Motors & 3 points in drawing room.

**[www.Zricks.com](http://www.Zricks.com)**



Flat -1	Flat -2	Flat -3	Flat -4	Flat -5	Flat -6	Flat -7
1890 Sft.	1368Sft.	1377 Sft.	2178 Sft.	2178 Sft.	1854 Sft.	2601 Sft.
3 BHK	2 BHK	2 BHK	3 BHK	3 BHK	3 BHK	3 BHK



ZRICKS.COM